

# Mammoth Foundation



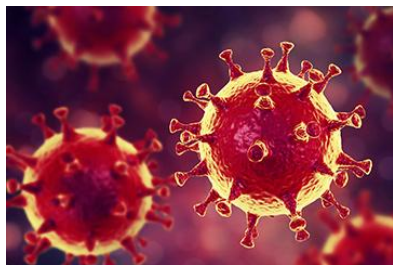
BGI 华大

vanke



**Mammoth foundation** is a young non-profit organization sponsored by BGI Group, Vanke Group and Green Pine Capital in Aug. 2019 basing Shenzhen, China. It aims to promote public benefits with the advantage of genome technology.

**BGI** always provides technical support at the first possible moment as needed, including sequencing the causal disease genome, developing diagnostic kit and providing solutions for treatment.



## SARS

Sequenced the SARS virus in less than 20 hours, and developed an enzyme immunoassay test kit in 96 hours, and donated 300,000 test.

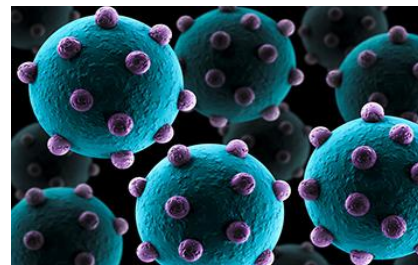
**2003**



## EHEC in Germany

Developed the diagnostic kit for this disease and disclosed all the scientific data and information to the international communities.

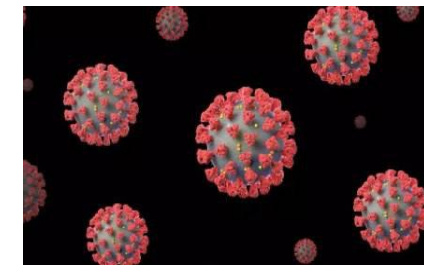
**2011**



## H7N9

Established a rapid detection platform which can detect samples accurately within 36 hours.

**2013**



## COVID-19

Distributing its RT-PCR kits to more than 70 countries and regions around the world.

**2019**



## Indian Ocean Tsunami

Identified more than a thousand DNA samples of tsunami victims.

**2004**



## Wenchuan Earthquake

Detect possible sudden health issues and infectious diseases.

**2008**



## Ya' an Earthquake

Provide free technical services for the earthquake-stricken areas, including disease surveillance, emergency pathogenic microorganisms detection

**2013**

# principle

The principle of Mammoth foundation is to advocate and develop gene-tech that is beneficial, equal, and accessible to all.





## upgrade biological laborator

The initial mission of foundation was to upgrade the original biological laboratory in schools or universities to enhance their experimental capabilities or to introduce sequencing technology

# biological laboratory

## schools、colleges and universities

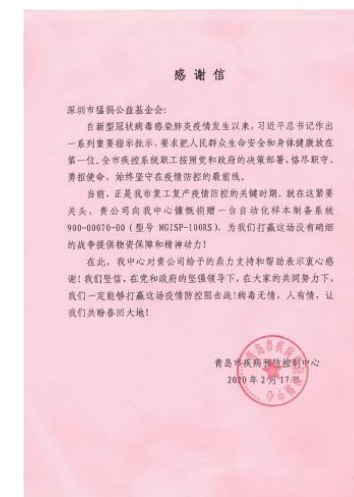
There were several high schools、colleges and universities signed agreements with us, like Beijing No.35 High School, Northeast Forestry University and so on.



# Upgrading the laboratory

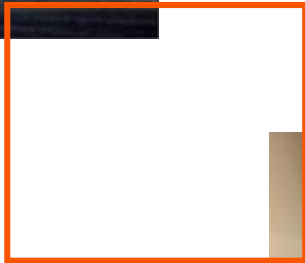
We found **16** hospitals that are applicable, half of which are within Hubei province, within 12 days (from 31<sup>st</sup> Jan. to 11<sup>th</sup> Feb.);

We donated more than 7 million RMB in this project. After upgrade, the average daily testing throughput increased by 200 people per day;





## Diamond Princess



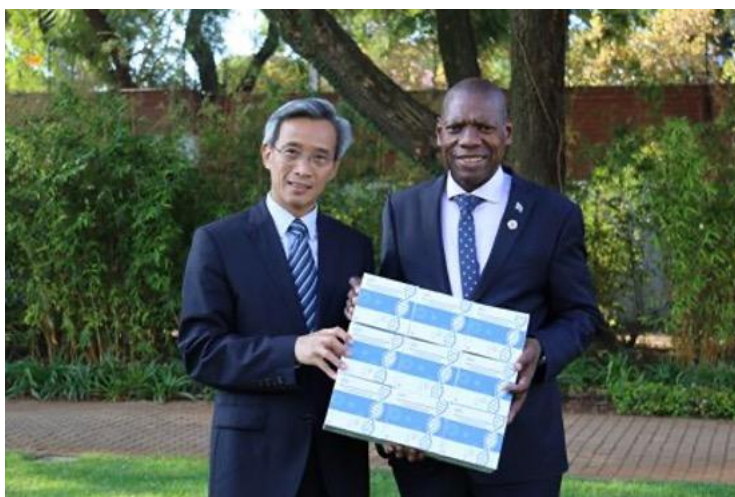
On February 12, Chairman Wang Shi met Mr. Kong Xuanyou, the Chinese ambassador to Japan; Ambassador Kong mentioned the severity of the epidemic on Diamond Princess; Mammoth Foundation and BGI donated **12500** kits to Japan together.



# International aid

---

Japan was the first international aid of Mammoth, after that, we donated more than **20,000** kits to help 19 countries, like Serbia, Ethiopia, Peru, Argentina, Philippines, Republic of South Africa and so on.

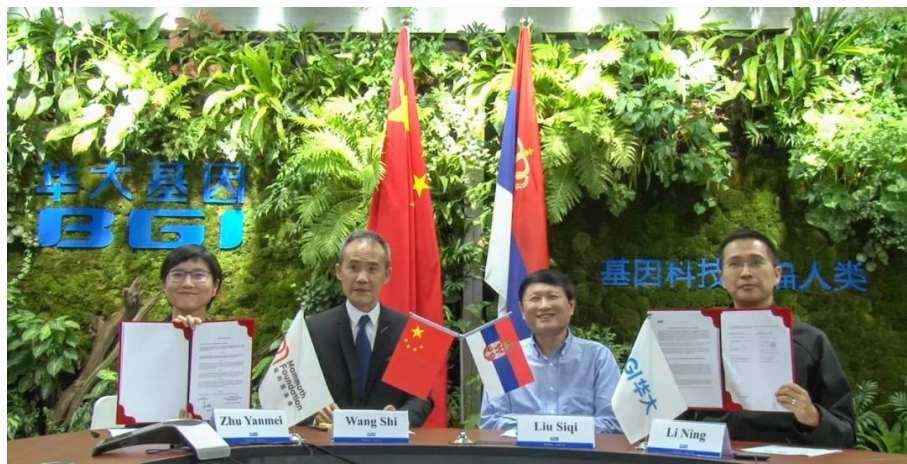






## The Huo-Yan Laboratory

The Serbian government and BGI signed an agreement entrusting BGI to build two "Huo-Yan" ("Fire Eye") COVID-19 Laboratory in Serbia, one in the capital city of Belgrade and another the southern city of Nis.





Bethune was the greatest doctor in the world who helped China during the Second World War; He did more than 300 surgeries in four months

# The Huo-Yan Laboratory

- Serbia was the first step, after that, we tried to help at least **10** countries in building Huo-Yan laboratory.
- For example, we plan to help Canada these days, which is Bethune's homeland.



# 捐赠证书

CERTIFICATE OF DONATION

尊敬的 \_\_\_\_ 先生 / 女士 / 公司:

为支持新型冠状病毒疫情防控, 慷慨捐赠安可信银离子医疗物资一批, 价值90万。

特授此证, 以示感谢!

深圳猛犸基金会  
2020年2月24日

华大基因



# Thanks

- Thanks to warm hearted people and companies like One Foundation, Tencent.



# COVID-19 diagnosis in Shenzhen middle school



Mammoth foundation help 7 middle schools to do Covid-19 diagnosis, because they plan to start on 27<sup>th</sup> Apr. After diagnosis, these students could come back to school safely.



## Future

---

Mammoth foundation will keep upgrading the original biological laboratory in schools or universities. By doing so, the students who are interested in biochemistry get the opportunities to get closer to genome world, operate the sequencer themselves, and put them in practice. It opens the door for college students to know the rules of real world---to understand what is happening and how to make a change, which is essential to education innovation as well.

Thanks !